

APP CRS	Rwy Idg	<b>3003</b>
<b>302°</b>	TDZE	<b>13</b>
	Apt Elev	<b>13</b>

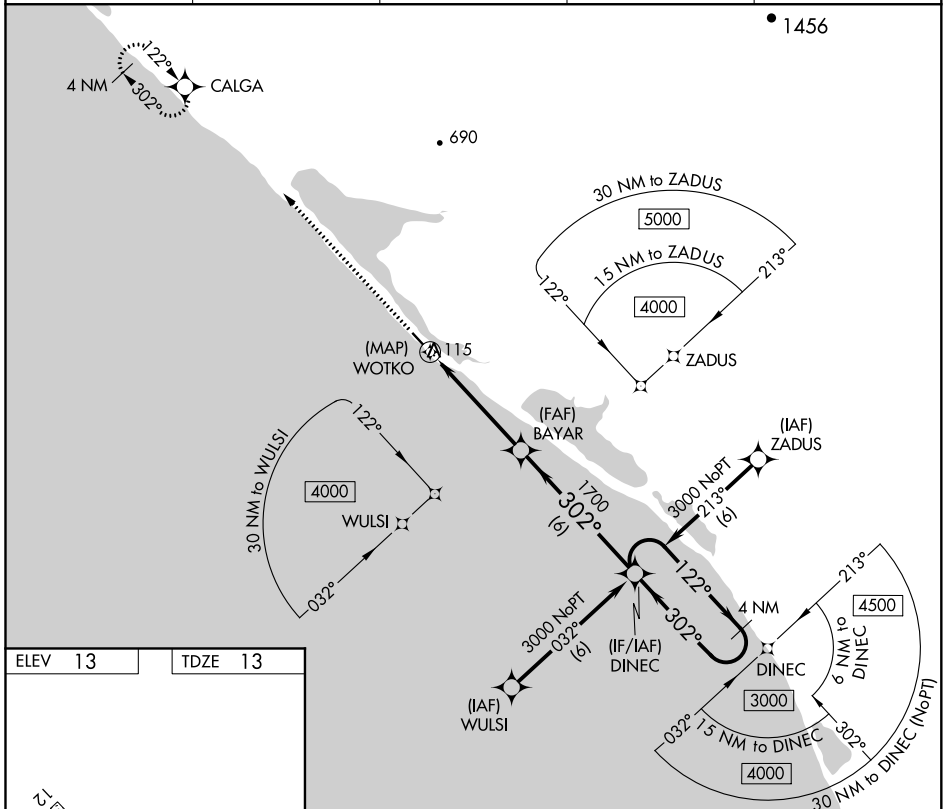
# RNAV (GPS) RWY 30

KIVALINA (KVL)(PAVL)

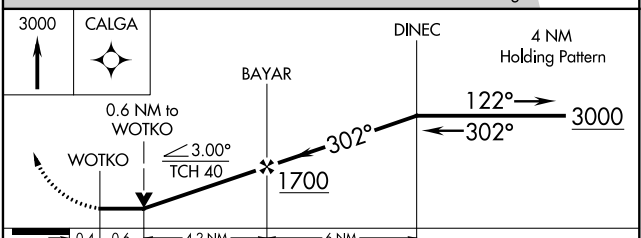
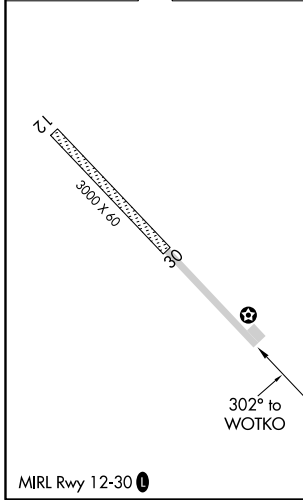
**⚠** DME/DME RNP-0.3 NA. When local altimeter setting not received, use Noatak altimeter setting and increase all MDA 340 feet and LNAV Cat C visibility 1 mile and Circling Cat C visibility ¾ mile. VDP NA when using Noatak altimeter setting.

**MISSED APPROACH:** Climb to 3000 direct CALGA and hold.

ASOS	WTK/PAWN AWOS-3P	ANCHORAGE CENTER	KOTZEBUE RADIO	UNICOM
<b>135.8</b>	<b>135.75</b>	<b>119.2 263.0</b>	<b>122.55</b>	<b>122.8 (CTAF)</b> <b>📻</b>



ELEV 13	TDZE 13
---------	---------



CATEGORY	A	B	C	D
LNAV MDA	380-1 367 (400-1)			NA
CIRCLING	440-1 427 (500-1)	480-1 467 (500-1)	480-1½ 467 (500-1½)	NA

AK, 25 FEB 2021 to 22 APR 2021

AK, 25 FEB 2021 to 22 APR 2021