

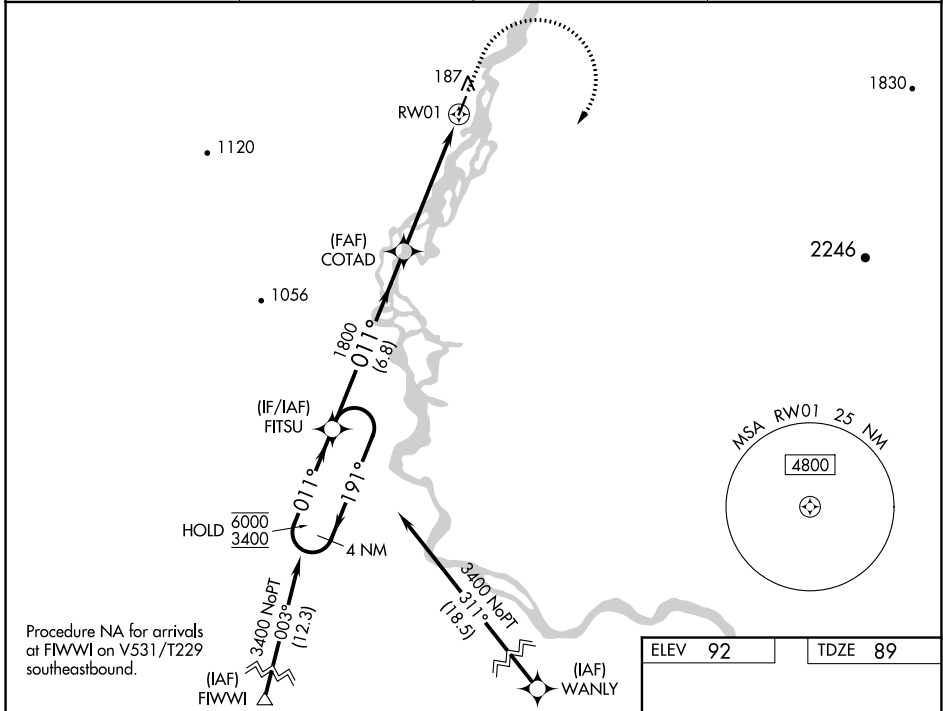
WAAS CH 61142 W01A	APP CRS 011°	Rwy Idg 3992 TDZE 89 Apt Elev 92
--	------------------------	---

RNAV (GPS) RWY 1

NOATAK (WTK)(PAWN)

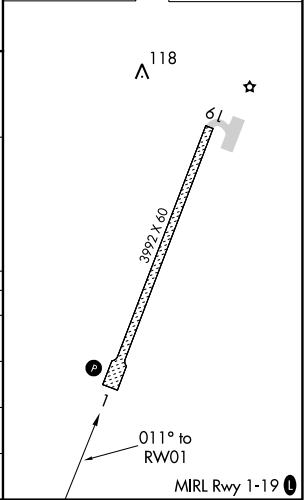
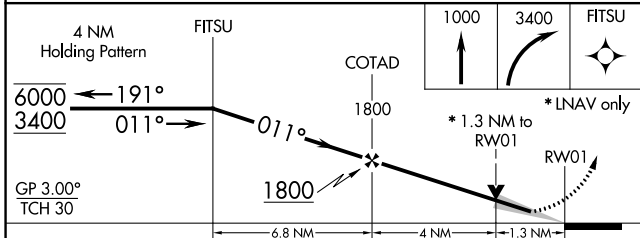
RNP APCH.	MISSED APPROACH: Climb to 1000 then climbing right turn to 3400 direct FITSU and hold.
For uncompensated Baro-VNAV systems, procedure NA below -22°C or above 54°C.	

AWOS-3P 135.75	ANCHORAGE CENTER 119.2 263.0	KOTZEBUE RADIO 122.4	UNICOM 122.8 (CTAF) 0
--------------------------	--	--------------------------------	---------------------------------



Procedure NA for arrivals at FWWWI on V531/T229 southeastbound.

ELEV 92	TDZE 89
---------	---------



CATEGORY	A	B	C	D
LPV DA		339-1	250 (300-1)	
LNAV/VNAV DA		339-1	250 (300-1)	
LNAV MDA	520-1	431 (500-1)	520-1¼	431 (500-1¼)
CIRCLING	520-1 428 (500-1)	560-1 468 (500-1)	560-1½ 468 (500-1½)	820-2¼ 728 (800-2¼)

AK, 25 FEB 2021 to 22 APR 2021

AK, 25 FEB 2021 to 22 APR 2021