

WAAS CH 53636 W04A	APP CRS 038°	Rwy Idg TDZE Apt Elev	3700 352 354
---------------------------------	------------------------	-----------------------------	---

RNAV (GPS) RWY 4

WASILLA (IYS) (PAWS)

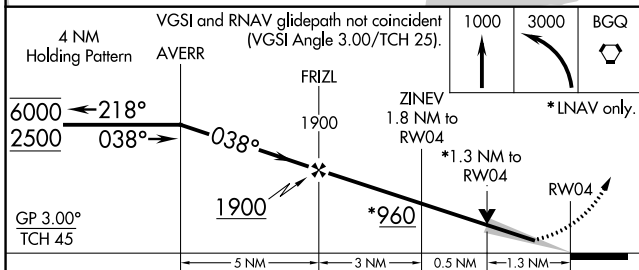
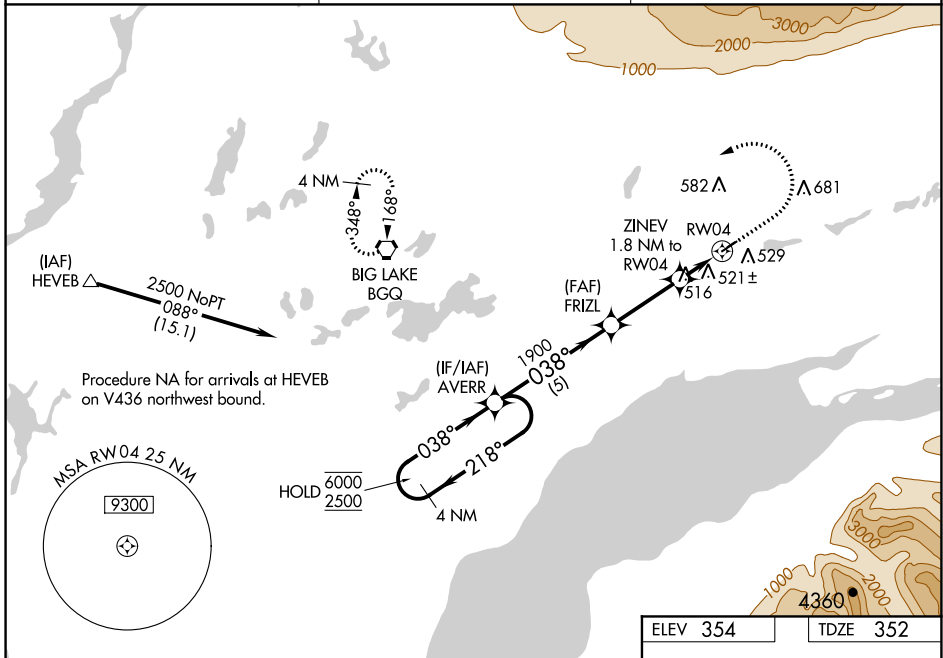
RNP APCH.

⚠ Circling NA to Rwy 4S and 22S. Baro-VNAV and VDP NA when using Palmer altimeter setting. For uncompensated Baro-VNAV systems, LNAV/VNAV NA below -20°C or above 54°C. When local altimeter setting not received, use Palmer altimeter setting and increase all DA 46 feet, all MDA 60 feet and all visibilities ¼ mile.

⚠ MISSED APPROACH: Climb to 1000 then climbing left turn to 3000 direct BQG VORTAC and hold.

❄ -31°C

AWOS-3P 135.25	ANCHORAGE APP CON 119.1 363.2	CTAF 122.8
--------------------------	---	----------------------



CATEGORY	A	B	C	D
LPV DA	602-3/4	250 (300-3/4)		NA
LNAV/VNAV DA	828-1 5/8	476 (500-1 1/8)		NA
LNAV MDA	780-1	428 (500-1)		NA
C CIRCLING	1000-1	646 (700-1)		NA

ELEV 354	TDZE 352
----------	----------

Diagram of RWY 4 showing 0.5% and 0.45% grades, and 3700 X 75 dimensions.

MIRL Rwy 4-22
REIL Rwy 4 and 22

AK, 25 FEB 2021 to 22 APR 2021

AK, 25 FEB 2021 to 22 APR 2021