

WAAS CH <b>78414</b> <b>W02A</b>	APP CRS <b>025°</b>	Rwy ldg TDZE Apt Elev	<b>5087</b> <b>25</b> <b>33</b>
--	------------------------	-----------------------------	---------------------------------------

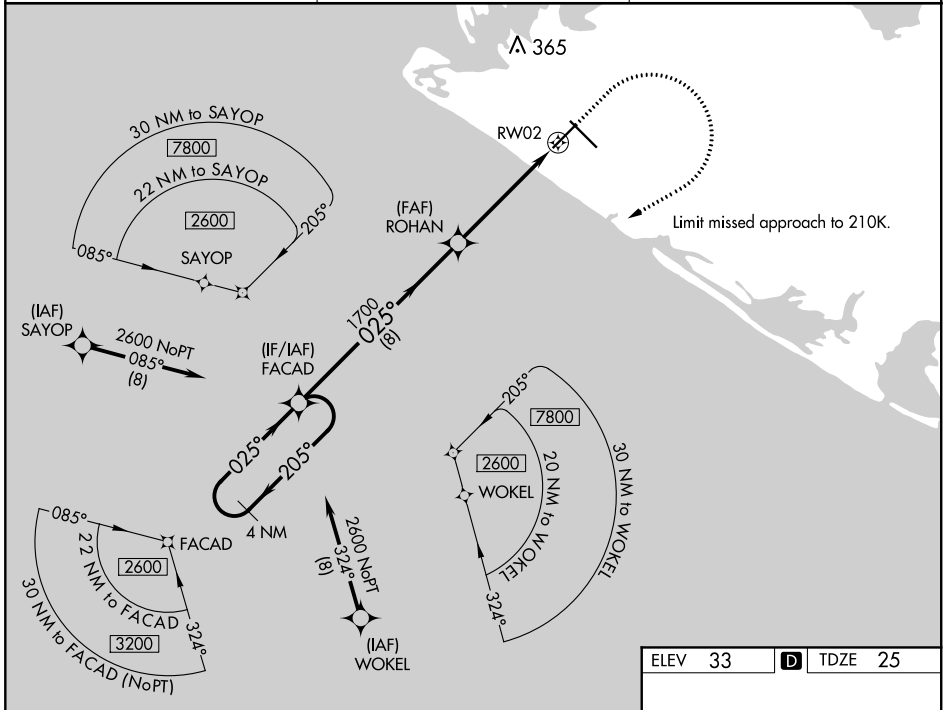
# RNAV (GPS) RWY 2

YAKUTAT (YAK) (PAYA)

**⚠** For uncompensated Baro-VNAV systems, LNAV/VNAV NA below -18°C (0°F) or above 54°C (130°F). DME/DME RNP-0.3 NA. Helicopter visibility reduction below ¾ SM NA.

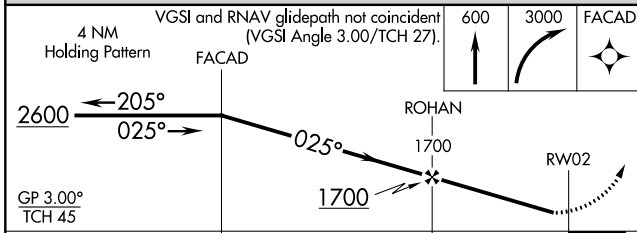
MISSED APPROACH: Climb to 600 then climbing right turn to 3000 direct FACAD and hold.

ASOS <b>135.75</b>	ANCHORAGE CENTER <b>119.0 263.1</b>	JUNEAU RADIO <b>123.6 (CTAF) ①</b>
-----------------------	--	---------------------------------------



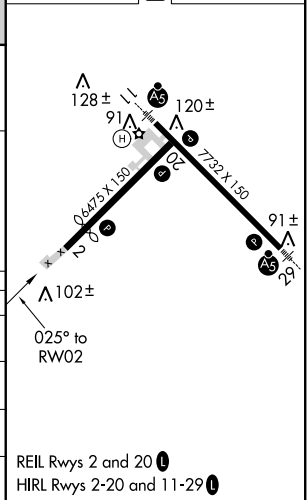
AK, 25 FEB 2021 to 22 APR 2021

AK, 25 FEB 2021 to 22 APR 2021



ELEV 33	<b>D</b> TDZE 25
---------	------------------

CATEGORY	A	B	C	D
LPV DA	275-1 250 (300-1)			
LNAV/VNAV DA	515-1½ 490 (500-1½)			
LNAV MDA	460-1	435 (500-1)	460-1¾	435 (500-1¾)
<b>C</b> CIRCLING	500-1 467 (500-1)	520-1 487 (500-1)	620-1½ 587 (600-1½)	720-2¼ 687 (700-2¼)



REIL Rwy 2 and 20 ①  
HIRL Rwy 2-20 and 11-29 ①