

WAAS CH 66006 W29A	APP CRS 295°	Rwy Idg 7732 TDZE 26 Apt Elev 33
--	------------------------	---

RNAV (GPS) RWY 29

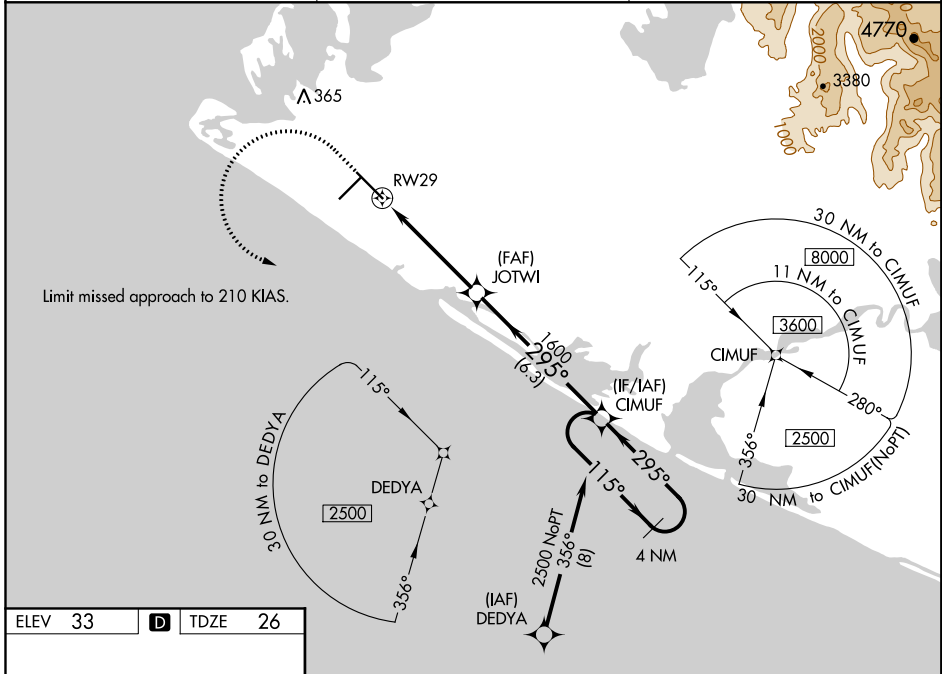
YAKUTAT (YAK) (PAYA)

⚠ Inoperative table does not apply to LPV all Cats and LNAV Cats A and B. For uncompensated Baro-VNAV systems, LNAV/VNAV NA below -18°C (0°F) or above 54°C (130°F). For inoperative MALSR, increase LNAV/VNAV all Cats visibility to 1½ miles; LNAV Cats C and D visibility to 1¾ miles. DME/DME RNP-0.3 NA. Helicopter visibility reduction below ¾ SM NA.

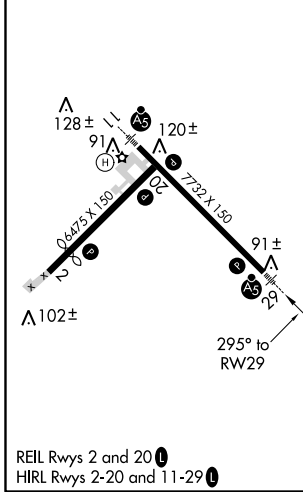
MALSR

MISSED APPROACH: Climb to 600 then climbing left turn to 3000 direct CIMUF and hold.

ASOS 135.75	ANCHORAGE CENTER 119.0 263.1	JUNEAU RADIO 123.6 (CTAF) 0
-----------------------	--	---------------------------------------



ELEV 33	D	TDZE 26
---------	----------	---------



600 3000 CIMUF

VGSI and RNAV glidepath not coincident (VGSI Angle 3.00/TCH 51).

4 NM Holding Pattern

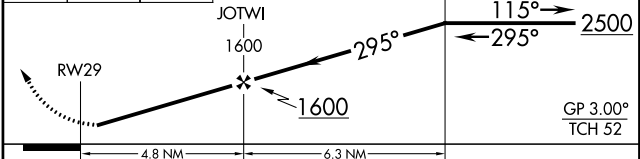
CIMUF

115°

295°

2500

GP 3.00° TCH 52



CATEGORY	A	B	C	D
LPV DA		287-1	261 (300-1)	
LNAV/VNAV DA		484-1½	458 (500-1½)	
LNAV MDA		480-1	454 (500-1)	
C CIRCLING	500-1 467 (500-1)	520-1 487 (500-1)	620-1½ 587 (600-1½)	720-2¼ 687 (700-2¼)

AK, 25 FEB 2021 to 22 APR 2021

AK, 25 FEB 2021 to 22 APR 2021