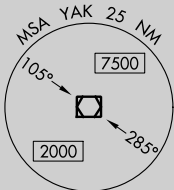
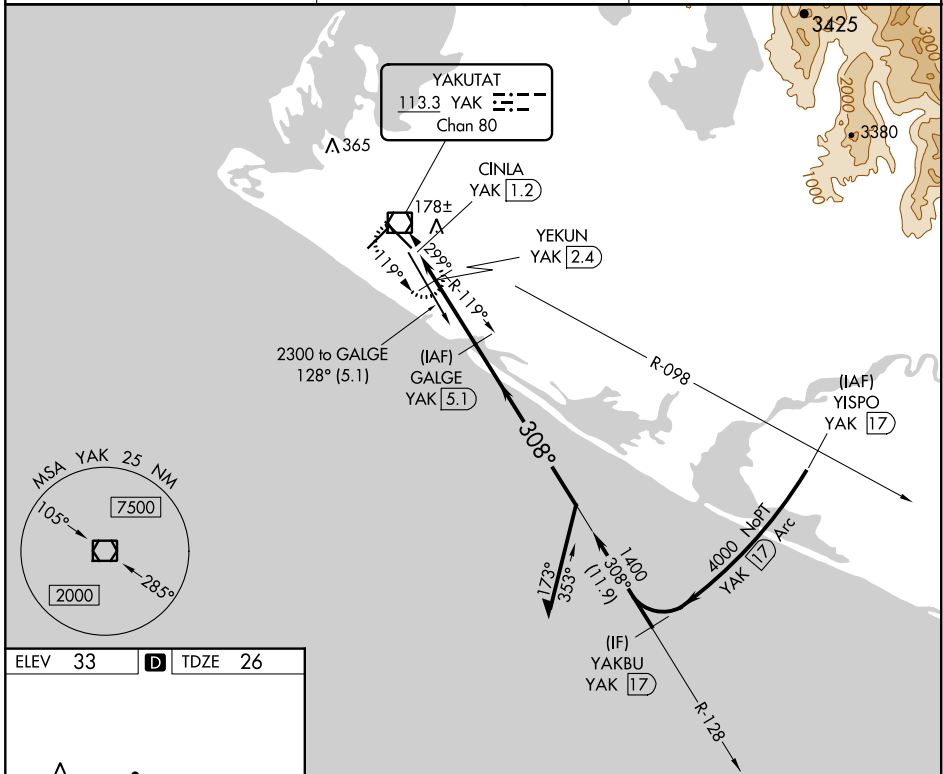


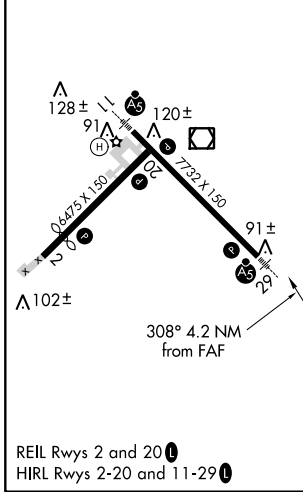
VOR/DME YAK 113.3 Chan 80	APP CRS 308°	Rwy Idg 7732 TDZE 26 Apt Elev 33
---	------------------------	---

VOR/DME RWY 29 YAKUTAT (YAK) (PAYA)

<p>▽ Inop table does not apply to Cats A/B. ▲ For inop MALSR, increase Cats C/D visibility to 1½ mile.</p>	<p>MALSR </p>	<p>MISSED APPROACH: Climb to 2000 direct YAK VOR/DME and hold, continue climb-in-hold to 2000.</p>
<p>ASOS 135.75</p>	<p>ANCHORAGE CENTER 119.0 263.1</p>	<p>JUNEAU RADIO 123.6 (CTAF) 0</p>



ELEV 33	D	TDZE 26
---------	----------	---------



<p>2000 YAK </p>	<p>VGSI and descent angles not coincident (VGSI Angle 3.00/TCH 51).</p>	<p>Remain within 10 NM</p>		
<p>YAK VOR/DME CINLA YAK 1.2</p>	<p>YEKUN YAK 2.4</p>	<p>GALGE YAK 5.1</p>		
<p>308°</p>	<p>128°</p>	<p>1800</p>		
<p>540</p>	<p>1400</p>	<p>308°</p>		
<p>0.3</p>	<p>1.2 NM</p>	<p>2.7 NM</p>		
<p>CATEGORY</p>	<p>A</p>	<p>B</p>	<p>C</p>	<p>D</p>
<p>S-29</p>	<p>440-1</p>	<p>414 (500-1)</p>	<p>720-2¼</p>	<p>687 (700-2¼)</p>
<p>C CIRCLING</p>	<p>500-1 467 (500-1)</p>	<p>520-1 487 (500-1)</p>	<p>620-1½ 587 (600-1½)</p>	<p>720-2¼ 687 (700-2¼)</p>

AK, 25 FEB 2021 to 22 APR 2021

AK, 25 FEB 2021 to 22 APR 2021