

WAAS CH 82213 W18A	APP CRS 183°	Rwy ldg 3200 TDZE 61 Apt Elev 80
--	------------------------	---

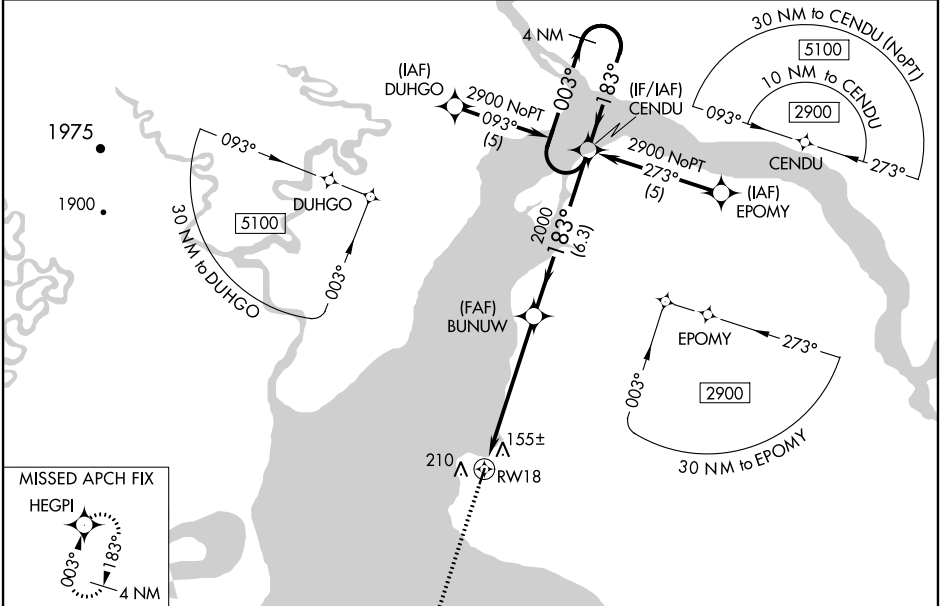
RNAV (GPS) RWY 18

CLARKS POINT (CLP) (PFCL)

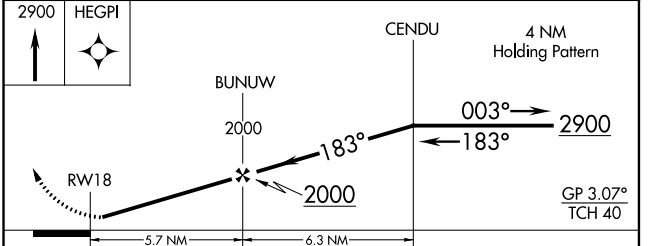
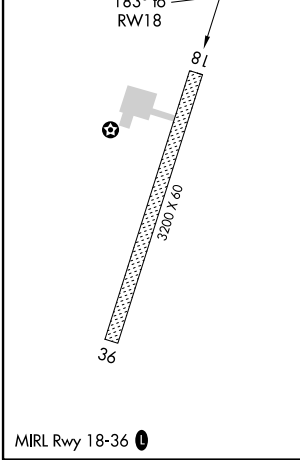
Baro-VNAV NA. DME/DME RNP-0.3 NA. Procedure NA at night.
 NA. When local altimeter setting not received, use Dillingham altimeter setting.
 -34°C. Rwy 18 helicopter visibility reduction below 1 SM NA.

MISSED APPROACH: Climb to 2900 direct HEGPI and hold.

AWOS-3P 135.55	DLG/PADL AWOS-3P 125.0	ANCHORAGE CENTER 132.75 282.35	CTAF 122.9
--------------------------	----------------------------------	--	----------------------



ELEV 80	TDZE 61
---------	---------



CATEGORY	A	B	C	D
LPV DA	355-1 294 (300-1)			
LNAV/VNAV DA	464-1½ 403 (400-1½)			
LNAV MDA	620-1	559 (600-1)	620-1½ 559 (600-1½)	620-1¾ 559 (600-1¾)
CIRCLING	620-1	540 (600-1)	620-1½ 540 (600-1½)	640-2 560 (600-2)

AK, 25 FEB 2021 to 22 APR 2021

AK, 25 FEB 2021 to 22 APR 2021