

WAAS CH 99314 W24A	APP CRS 242°	Rwy Idg TDZE Apt Elev	4000 149 149
--	------------------------	-----------------------------	---

RNAV (GPS) RWY 24

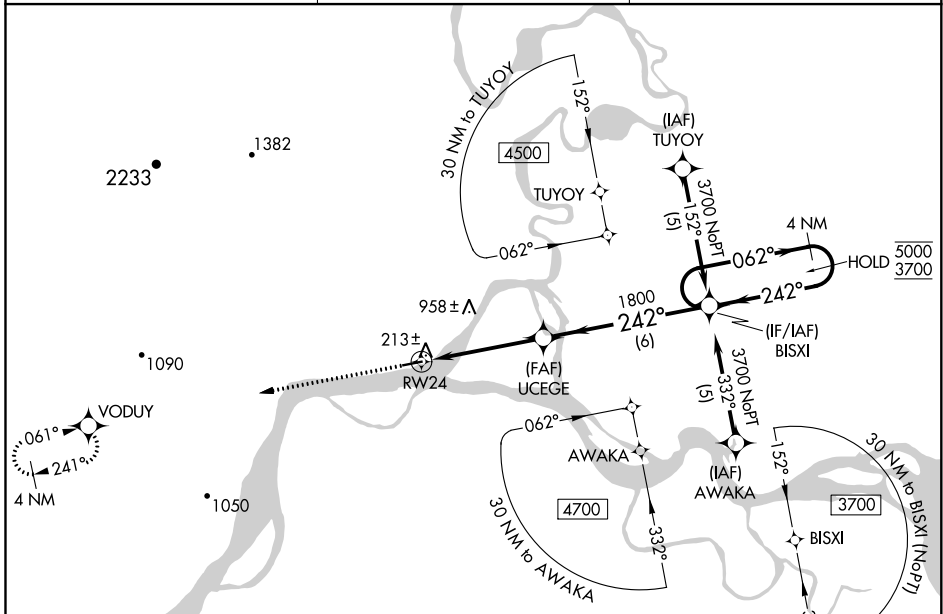
KOYUKUK (KYU) (PFKU)

RNP APCH.

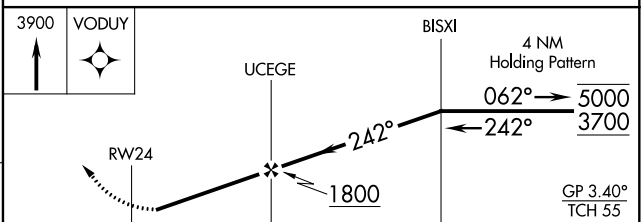
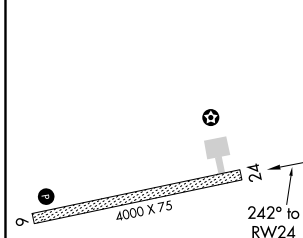
- Rwy 24 helicopter visibility reduction below 1 SM NA. Baro-VNAV NA.
- NA Use Galena altimeter setting; when not received, procedure NA. Straight-in and Circling Rwy 24 NA at night.
- 25°C

MISSED APPROACH: Climb to 3900 direct VODUY and hold, continue climb-in-hold to 3900.

GAL/PAGA AWOS-3 132.525	ANCHORAGE CENTER 127.0 290.2	CTAF 122.9
-----------------------------------	--	----------------------



ELEV 149	TDZE 149
----------	----------



CATEGORY	A	B	C	D
LPV DA	484-1 335 (400-1)			NA
LNAV/VNAV DA	537-1¼ 388 (400-1¼)			NA
LNAV MDA	1060-1¼	911 (1000-1¼)	1060-2¾ 911 (1000-2¾)	NA
CIRCLING	1060-1¼	911 (1000-1¼)	1060-2¾ 911 (1000-2¾)	NA

REIL Rwy 6
MIRL Rwy 6-24

KOYUKUK, ALASKA
Orig-A 15AUG19

64°53'N-157°44'W

RNAV (GPS) RWY 24

AK, 25 FEB 2021 to 22 APR 2021

AK, 25 FEB 2021 to 22 APR 2021