

SN NDB 312	APP CRS 216°	Rwy Idg TDZE Apt Elev	N/A N/A 270
----------------------	------------------------	-----------------------------	----------------------------------------

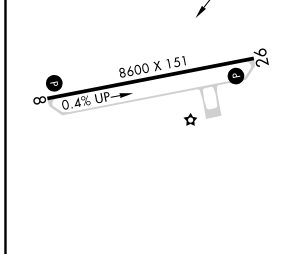
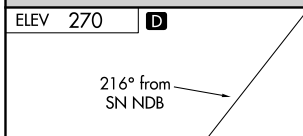
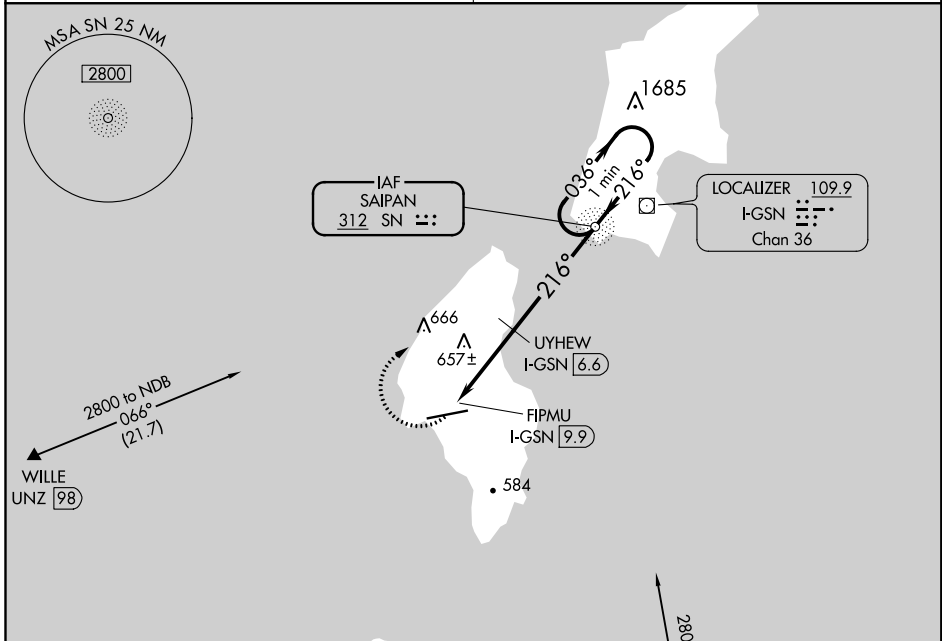
NDB-A

TINIAN INTL (TNI)(PGWT)

NA Obtain local altimeter setting on CTAF; when not received, use Saipan altimeter setting and increase all MDA 40 feet, and all Cats visibility ¼ SM. Increase UYHEW fix minimums Cats C and D visibility ¼ mile. # DME from I-GSN LOC/DME.

MISSED APPROACH: Climbing right turn to 2800 direct SN NDB and hold.

GUAM APP CON 118.4 290.5	SAIPAN RADIO 123.6 (CTAF) 0
------------------------------------	---------------------------------------

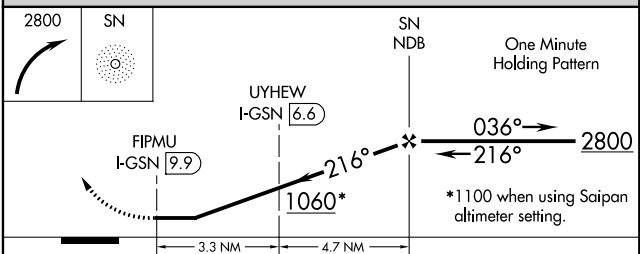


ELEV 270 **D**

MIRL Rwy 8-26 **1**
REIL Rwy 8 and 26 **1**

FAF to MAP 8 NM

Knots	60	90	120	150	180
Min:Sec	8:00	5:20	4:00	3:12	2:40



CATEGORY	A	B	C	D
C CIRCLING	1060-1	790 (800-1)	1060-2¼ 790 (800-2¼)	1060-2½ 790 (800-2½)
# UYHEW FIX MINIMUMS				
C CIRCLING	1000-1	730 (800-1)	1000-2 730 (800-2)	1060-2½ 790 (800-2½)