

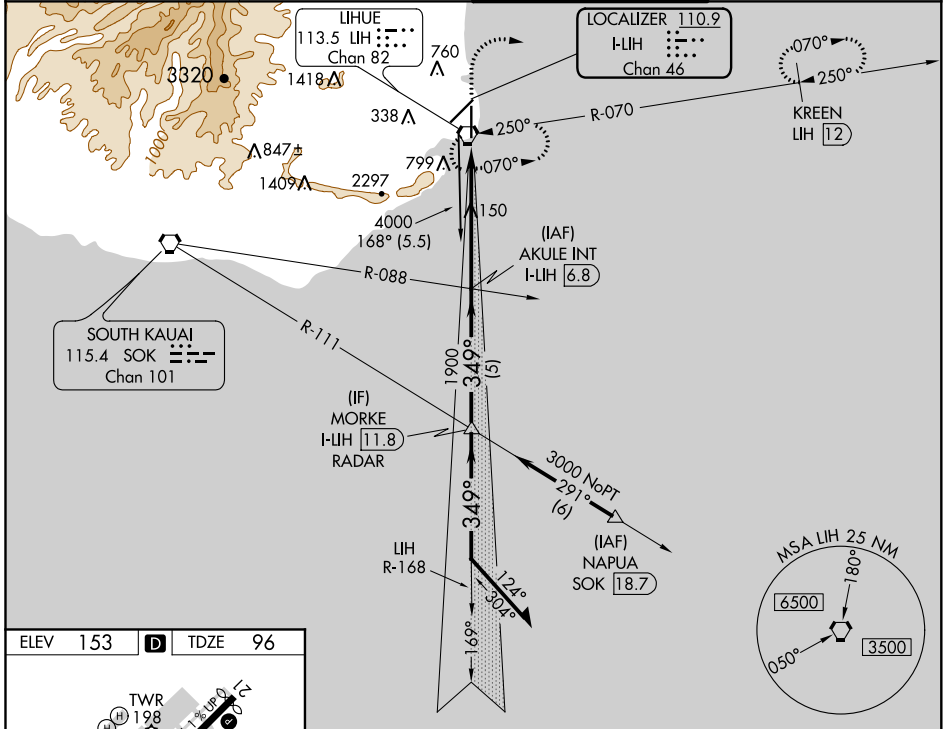
LOC/DME I-LIH <b>110.9</b> Chan <b>46</b>	APP CRS <b>349°</b>	Rwy Idg TDZE Apt Elev	<b>6500</b> <b>96</b> <b>153</b>
---	------------------------	-----------------------------	--

# ILS or LOC RWY 35

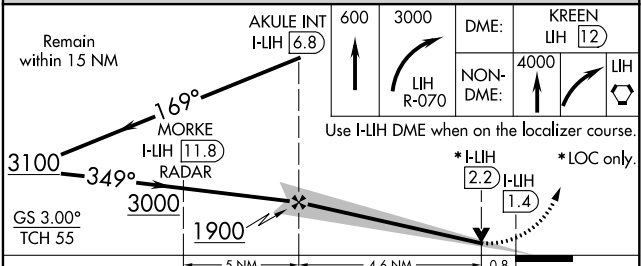
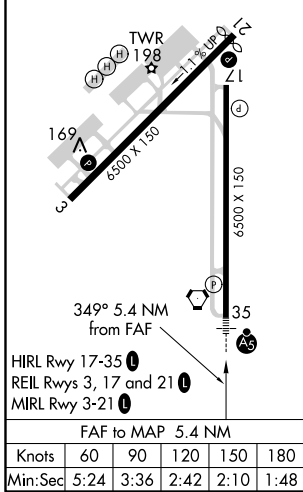
LIHUE (LIH)(PHLI)

<p><b>▽</b> Circling NA at night. <b>▲</b> Circling NA west of Rwy 17-35. For inop ALS, increase S-LOC Cat D and E visibility to 1 mile.</p>	<p>MALSR</p>	<p>MISSED APPROACH: Climb to 600 then climbing right turn to 3000 on LIH VORTAC R-070. DME aircraft continue to KREEN/LIH 12 DME and hold. Non-DME aircraft continue climb to 4000 then right turn direct LIH VORTAC and hold east, left turn, 250° inbound.</p>
--	--------------	--

ATIS <b>127.2</b>	HCF CENTER <b>126.5 269.4</b>	LIHUE TOWER ★ <b>118.9(CTAF) 0 263.1</b>	GND CON <b>121.9</b>
----------------------	----------------------------------	---	-------------------------



ELEV 153	<b>D</b>	TDZE 96
----------	----------	---------



CATEGORY	A	B	C	D	E
S-ILS 35	296-½ 200 (200-½)				
S-LOC 35	400-½ 304 (300-½)		400-¾ 304 (300-¾)		
CIRCLING	520-1 367 (400-1)	620-1 467 (500-1)	620-1½ 467 (500-1½)	720-2 567 (600-2)	NA

PAC, 25 FEB 2021 to 22 APR 2021

PAC, 25 FEB 2021 to 22 APR 2021