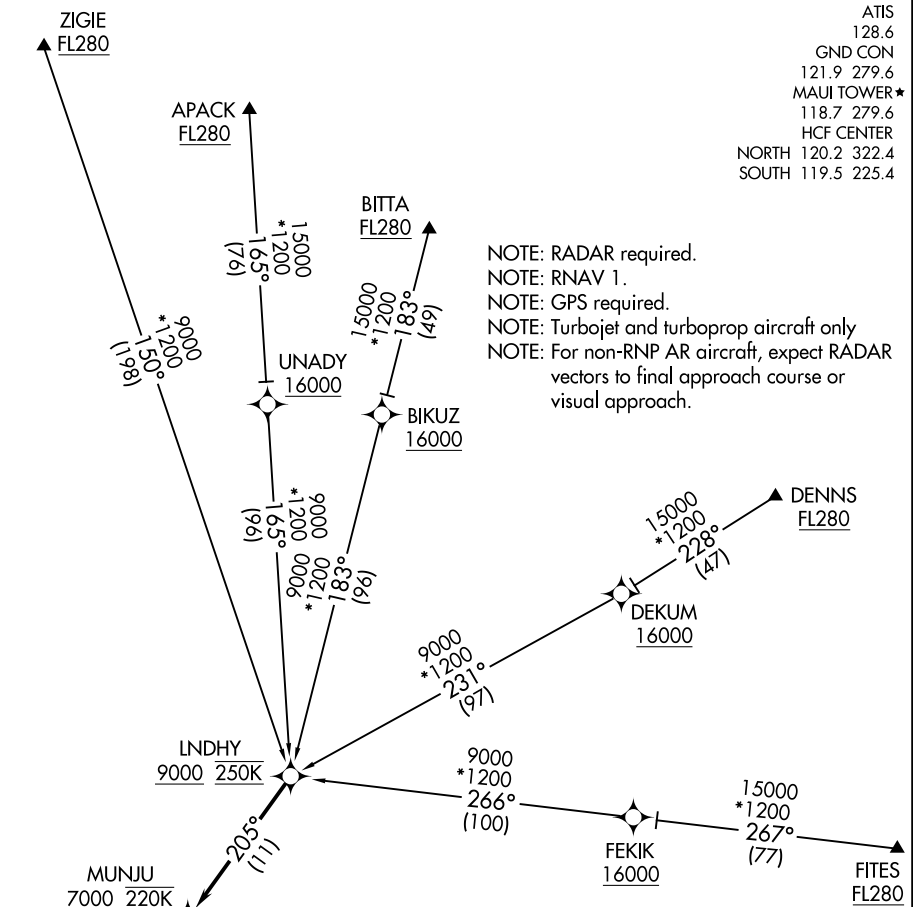


ATIS 128.6
 GND CON 121.9 279.6
 MAUI TOWER* 118.7 279.6
 HCF CENTER
 NORTH 120.2 322.4
 SOUTH 119.5 225.4

NOTE: RADAR required.
 NOTE: RNAV 1.
 NOTE: GPS required.
 NOTE: Turbojet and turboprop aircraft only
 NOTE: For non-RNP AR aircraft, expect RADAR vectors to final approach course or visual approach.

PAC: 25 FEB 2021 to 22 APR 2021

PAC: 25 FEB 2021 to 22 APR 2021



ARRIVAL ROUTE DESCRIPTION

APACK TRANSITION (APACK.LNDHY1)
BITTA TRANSITION (BITTA.LNDHY1)
DENNS TRANSITION (DENNS.LNDHY1)
FITES TRANSITION (FITES.LNDHY1)
ZIGIE TRANSITION (ZIGIE.LNDHY1)

From LNDHY on track 205° to cross MUNJU at or above 7000 and at 220K, then on track 204° to cross HOMAI at 5000 and at 210K, then on track 204° . Expect RNAV (RNP)/ILS/Visual Approach Landing Rwy 2, as assigned by ATC.

NOTE: Chart not to scale.