

(ONOH12.ONOHI) 18032

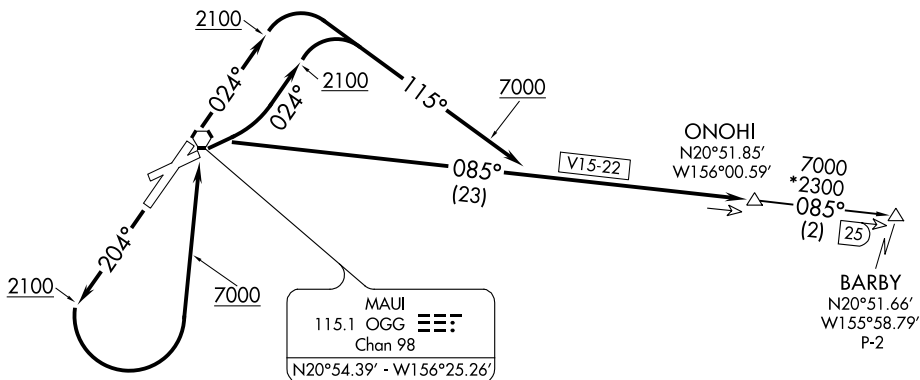
ONOH1 TWO DEPARTURE

AL-762 (FAA)

KAHULUI (OGG)(PHOG)
KAHULUI, HAWAII

ATIS 128.6
CLNC DEL
120.6 290.5
GND CON
121.9 279.6
MAUI TOWER*
118.7 (CTAF) 279.6
HCF APPROACH
NORTH 120.2 322.4
SOUTH 119.5 225.4

**TOP ALTITUDE:
7000**



NOTE: DME required.

TAKEOFF MINIMUMS

Rwy 23: NA- obstacles and ATC.

Rwy 2: Standard with ATC climb of 480' per NM to 2200.

Rwy 5: Standard with ATC climb of 480' per NM to 2900.

Rwy 20: Standard with minimum climb of 480' per NM to 7000.

NOTE: Chart not to scale.



DEPARTURE ROUTE DESCRIPTION

TAKEOFF RUNWAY 2: Climb on heading 024° to 2100 then climbing right turn to 7000 to ONOHI/OGG 23 DME via heading 115° and OGG R-085.

TAKEOFF RUNWAY 5: Climbing left turn on heading 024° to 2100 then climbing right turn to 7000 to ONOHI/OGG 23 DME via heading 115° and OGG R-085.

TAKEOFF RUNWAY 20: Climb on heading 204° to 2100 then climbing left turn to 7000 to ONOHI/OGG 23 DME via direct OGG VORTAC and OGG R-085.

BARBY TRANSITION (ONOH12.BARBY): From over ONOHI/OGG 23 DME on OGG R-085 to BARBY/OGG 25 DME.

ONOH1 TWO DEPARTURE

(ONOH12.ONOHI) 20AUG15

KAHULUI, HAWAII
KAHULUI (OGG)(PHOG)

PAC, 25 FEB 2021 to 22 APR 2021

PAC, 25 FEB 2021 to 22 APR 2021