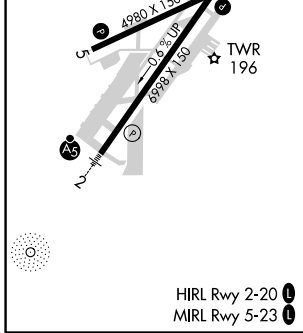
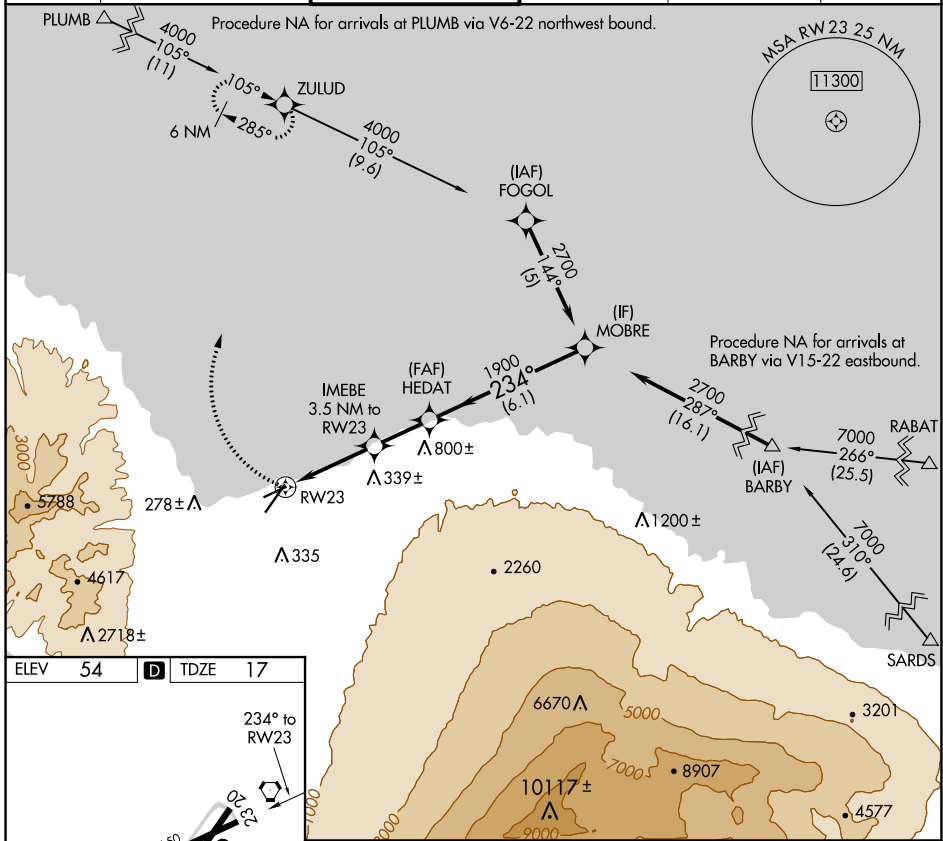


APP CRS 234°	Rwy Idg 4980
	TDZE 17
	Apt Elev 54

RNAV (GPS) RWY 23

KAHALUI (OGG)(PHOG)

▽	DME/DME RNP-0.3 NA.		MISSED APPROACH: Climbing right turn to 4000 direct ZULUD and hold, continue climb-in-hold to 4000.		
ATIS 128.6	HCF APPROACH 120.2 322.4 (NORTH) 119.5 225.4 (SOUTH)	MAUI TOWER ★ 118.7 (CTAF) 0 279.6	GND CON 121.9 279.6	CLNC DEL 120.6 290.5	UNICOM 122.95



4000	ZULUD	HEDAT	MOBRE
IMEBE 3.5 NM to RW23			
RW23	1200	1900	2700
	3.05° TCH 50		Procedure Turn NA
	3.5 NM	2.2 NM	6.1 NM
CATEGORY	A	B	C
LNAV MDA	460-1	443 (500-1)	460-1¼
			443 (500-1½)
CIRCLING	500-1	620-1	780-2
	446 (500-1)	566 (600-1)	726 (800-2)
			1180-3
			1126 (1200-3)

PAC, 25 FEB 2021 to 22 APR 2021

PAC, 25 FEB 2021 to 22 APR 2021