

APP CRS	Rwy Idg	6995
024°	TDZE	53
	Apt Elev	53


RNAV (RNP) Z RWY 2

KAHULUI (OGG)(PHOG)

RNP AR APCH.

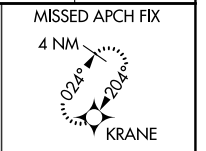
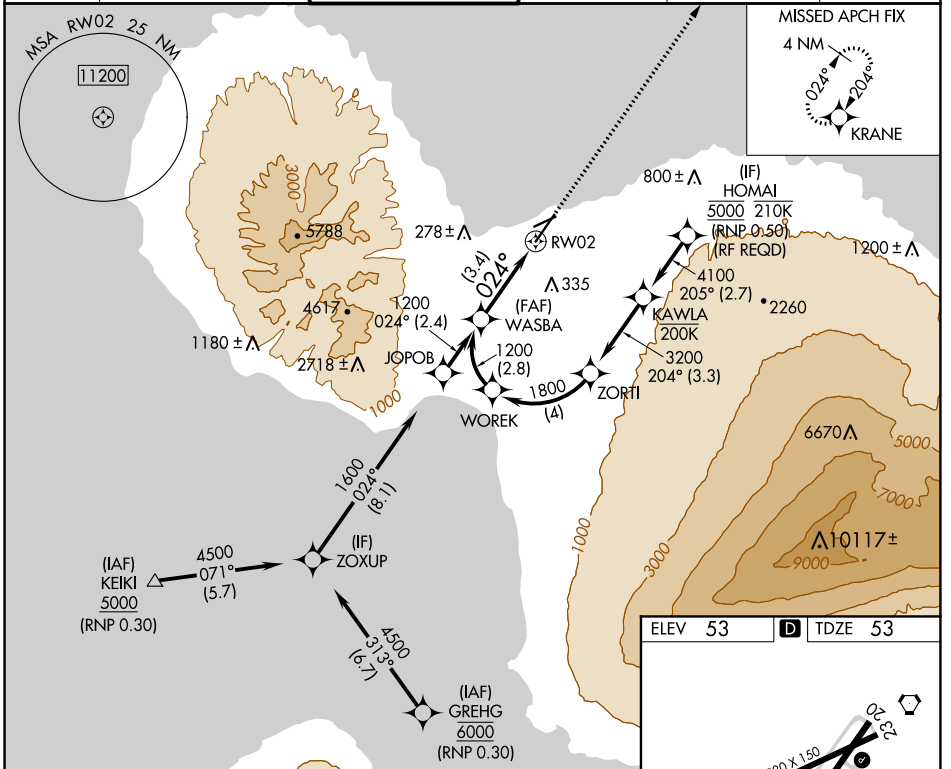
▼ For uncompensated Baro-VNAV systems, procedure NA below 14°C or above 54° C. When local altimeter setting not received, procedure NA. For inop ALS, increase RNP 0.30 all Cats visibility to 7/8 SM.

MALSR

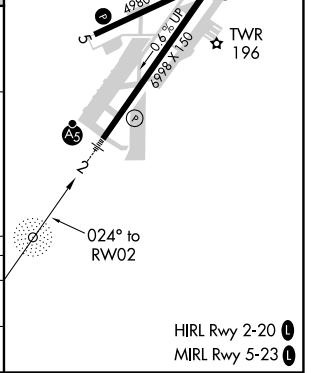


MISSED APPROACH: Climb to 3000 direct KRANE and hold.

ATIS	HCF APPROACH	MAUI TOWER ★	GND CON	CLNC DEL	UNICOM
128.6	120.2 322.4 (NORTH) 119.5 225.4 (SOUTH)	118.7 (CTAF) 0 279.6	121.9 279.6	120.6 290.5	122.95



WASBA	VGSi and RNAV glidepath not coincident (VGSi Angle 3.00/TCH 77).			3000	KRANE
1200	See planview for multiple IF locations.			↑	✧
GP 3.00°	024°			RW02	
TCH 62	3.4 NM				
CATEGORY	A	B	C	D	
RNP 0.30 DA	349-3/4			296 (300-3/4)	
AUTHORIZATION REQUIRED					



HIRL Rwy 2-20
MIRL Rwy 5-23

PAC, 25 FEB 2021 to 22 APR 2021

PAC, 25 FEB 2021 to 22 APR 2021