

# RNAV (GPS) RWY 21

HILO INTL (ITO) (PHTO)

APP CRS <b>210°</b>	Rwy Idg <b>5510</b>
	TDZE <b>31</b>
	Apt Elev <b>38</b>

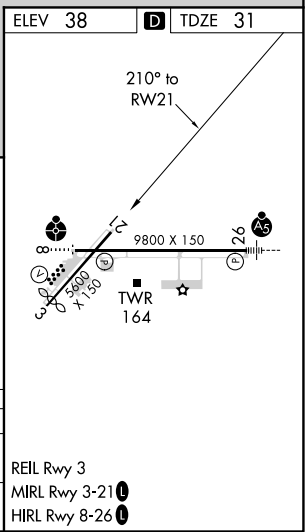
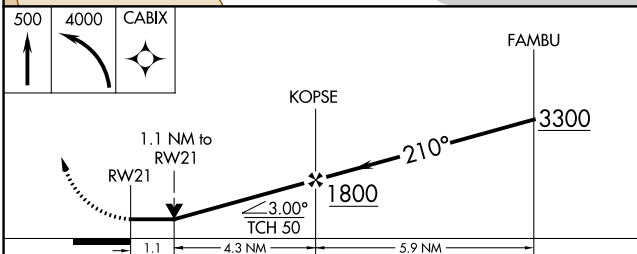
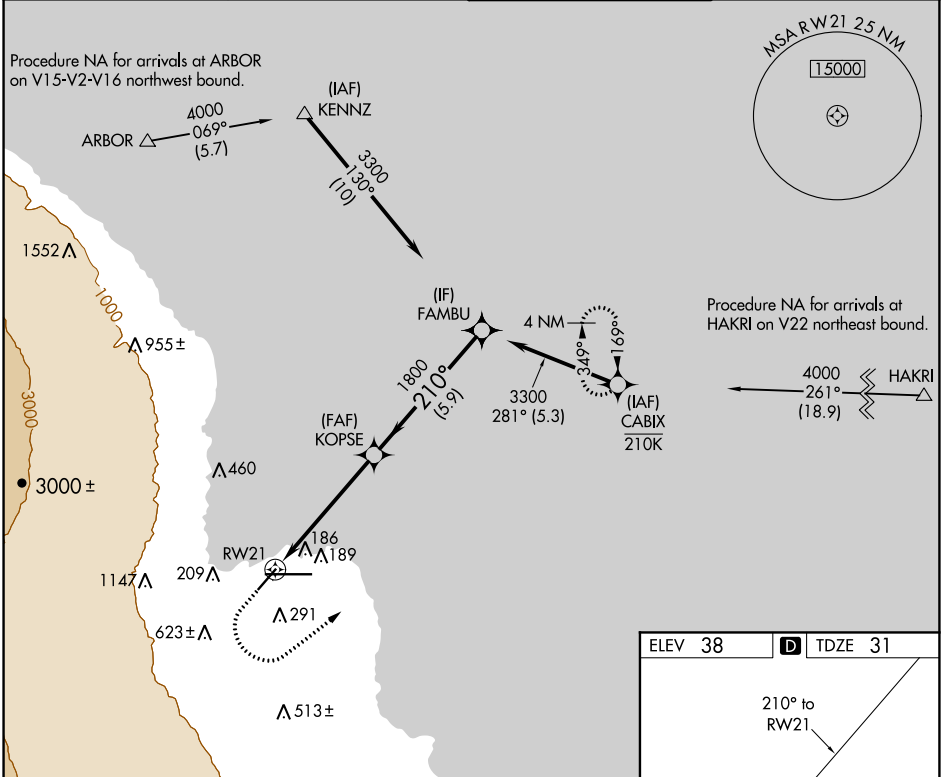
RNP APCH.

**▽** Circling NA south of Rwy 8-26. Rwy 21 helicopter visibility reduction below 3/4 SM NA.

**▲**

MISSED APPROACH: Climb to 500, then climbing left turn to 4000 direct CABIX and hold, continue climb-in-hold to 4000.

ATIS <b>126.4</b>	HILO APP CON* <b>119.7 269.2</b>	HILO TOWER* <b>118.1(CTAF) 0 263.1</b>	GND CON <b>121.9</b>
----------------------	-------------------------------------	---	-------------------------



CATEGORY	A	B	C	D
LNAV MDA	440-1	409 (500-1)	440-1 1/8	409 (500-1 1/8)
<b>C</b> CIRCLING	500-1 462 (500-1)	540-1 502 (600-1)	840-2 1/4 802 (900-2 1/4)	1320-3 1282 (1300-3)

PAC, 25 FEB 2021 to 22 APR 2021

PAC, 25 FEB 2021 to 22 APR 2021