

APP CRS	Rwy ldg	9800
259°	TDZE	38
	Apt Elev	38


RNAV (GPS) RWY 26

HILO INTL (ITO) (PHTO)

RNP APCH.

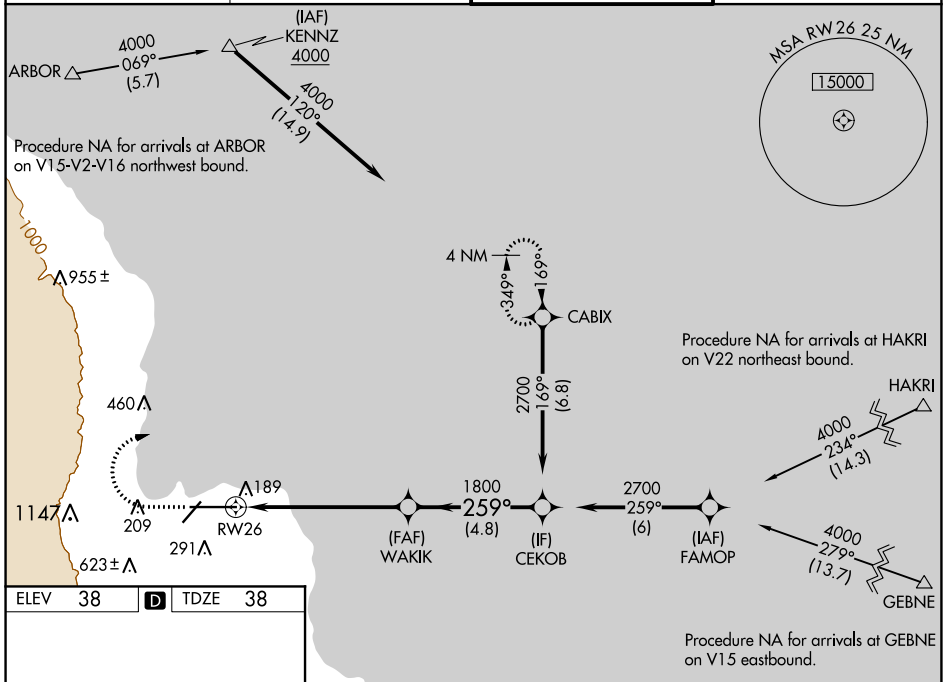
⚠ Circling NA south of Rwy 8-26. Rwy 26 helicopter visibility reduction below $\frac{3}{4}$ SM NA. WAAS VNAV NA. For uncompensated Baro-VNAV systems, LNAV/VNAV NA below 15°C or above 54°C. For inop ALS, increase LNAV/VNAV all Cats visibility to $\frac{5}{8}$ SM and increase LNAV Cat A/B visibility to 1 SM.

MALSR

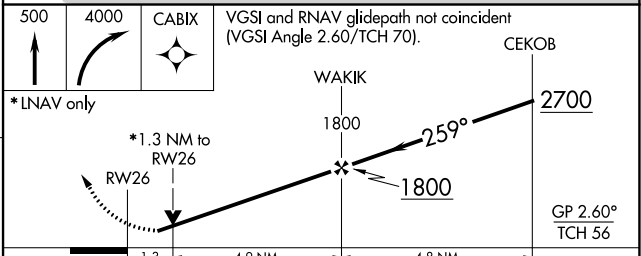
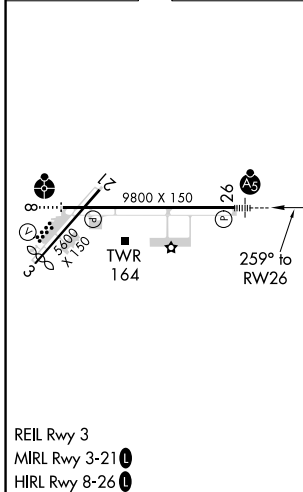


MISSED APPROACH: Climb to 500 then climbing right turn to 4000 direct CABIX and hold, continue climb-in-hold to 4000.

ATIS 126.4	HILO APP CON* 119.7 269.2	HILO TOWER* 118.1(CTAF) 263.1	GND CON 121.9
----------------------	-------------------------------------	---	-------------------------



ELEV 38	D	TDZE 38
---------	----------	---------



CATEGORY	A	B	C	D
LNAV/VNAV DA		350- $\frac{3}{4}$	312 (400- $\frac{3}{4}$)	
LNAV MDA		460- $\frac{3}{4}$	422 (500- $\frac{3}{4}$)	
C CIRCLING	500-1 462 (500-1)	540-1 502 (600-1)	840-2 $\frac{1}{4}$ 802 (900-2 $\frac{1}{4}$)	1320-3 1282 (1300-3)

PAC, 25 FEB 2021 to 22 APR 2021

PAC, 25 FEB 2021 to 22 APR 2021