

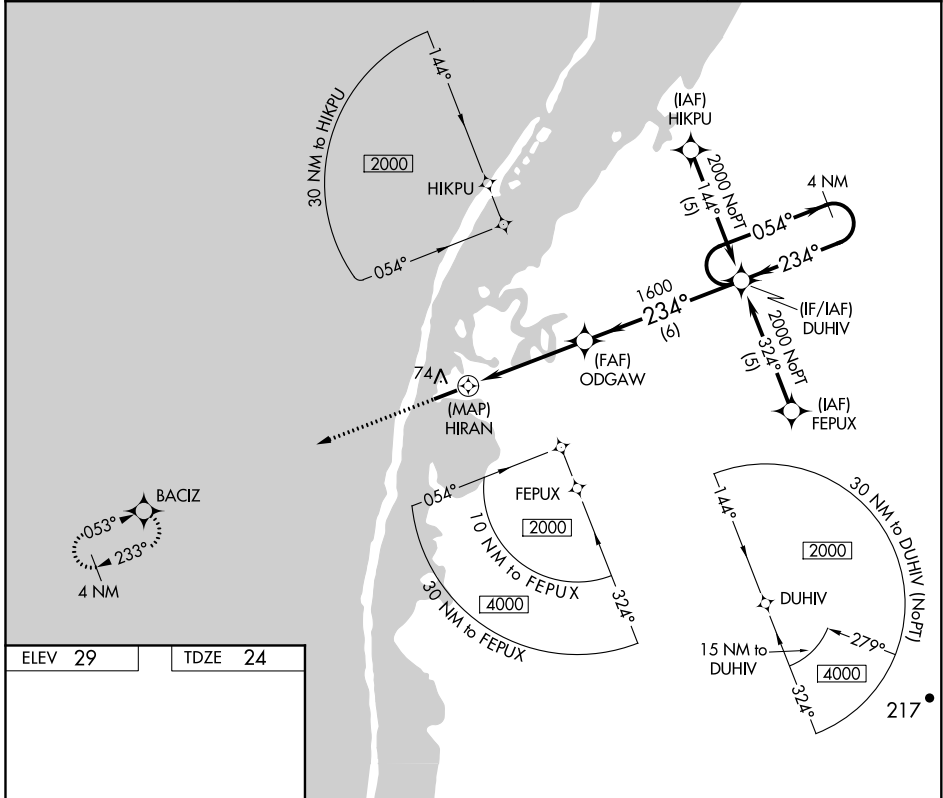
APP CRS	Rwy Idg	4500
234°	TDZE	24
	Apt Elev	29

RNAV (GPS) RWY 23

POINT LAY LRRS (PIZ)(PPIZ)

33 -33°C/-27°F	DME/DME RNP- 0.3 NA. When local altimeter setting not received, procedure NA.	MISSED APPROACH: Climb to 2000 direct BACIZ and hold.
-----------------------	---	---

AWOS-3P 135.65	ANCHORAGE CENTER 119.65 363.25	BARROW RADIO 122.4	CTAF 122.8
--------------------------	--	------------------------------	----------------------



ELEV 29	TDZE 24
---------	---------

MIRL Rwy 5-23
REIL Rwy 5 and 23

2000	BACIZ	ODGAW	DUHIV	4 NM Holding Pattern
↑	✧	0.6 NM to HIRAN	1600	054° → ← 234° 2000
HIRAN		TCH 35 2.96°		
0.5	0.6	3.9 NM	6 NM	
CATEGORY	A	B	C	D
LNAV MDA	400-1 376 (400-1)			NA
CIRCLING	440-1 411 (500-1)	480-1 451 (500-1)	480-1½ 451 (500-1½)	NA

AK, 25 FEB 2021 to 22 APR 2021

AK, 25 FEB 2021 to 22 APR 2021