

LOC/DME I-TMN <b>110.1</b> Chan <b>38</b>	APP CRS <b>100°</b>	Rwy Idg <b>7000</b> TDZE <b>24</b> Apt Elev <b>24</b>
---	------------------------	---

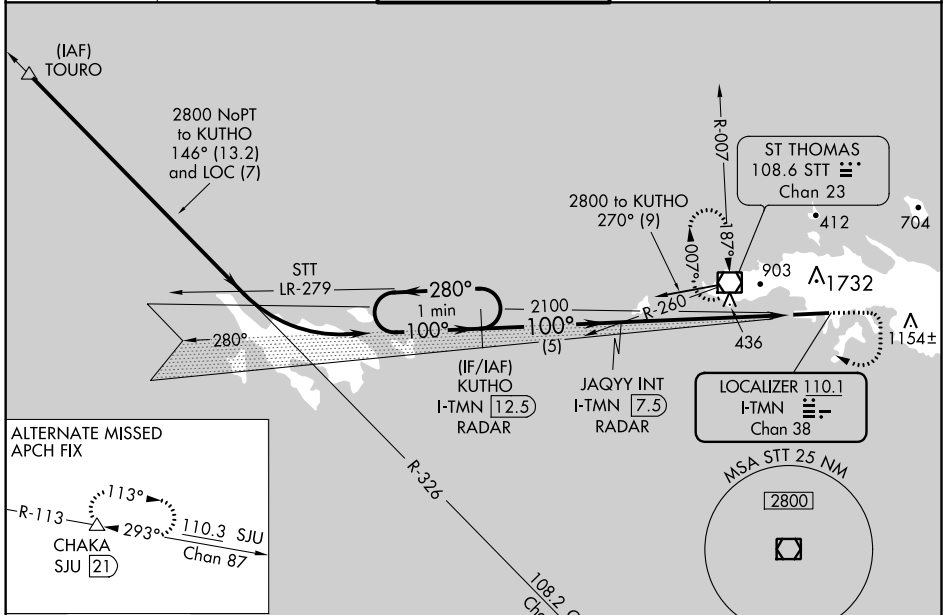
# ILS or LOC RWY 10

CYRIL E KING (STT)(TIST)

**⚠** Circling NA at night.  
**⚠** Procedure NA when control tower closed.  
 Circling NA north of Rwy 10-28.

MISSED APPROACH: Climb to 620 then climbing right turn to 2800 on heading 180° then right turn direct St Thomas VOR/DME and hold.

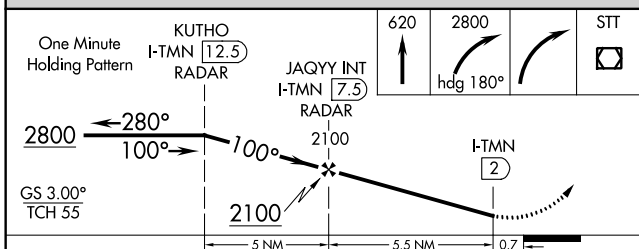
ATIS <b>124.0</b>	SAN JUAN CENTER <b>128.65 279.6</b>	ST. THOMAS TOWER ★ <b>118.8</b> (CTAF) <b>0 257.6</b> <b>118.1</b> (NORTH OF ISLAND)	GND CON <b>121.9</b>	UNICOM <b>122.95</b>
----------------------	--	--	-------------------------	-------------------------



ALTERNATE MISSED APCH FIX

R-113 113° 293° 110.3° SJU Chan 87

CAUTION: Pilots may encounter false illusory indications during night approaches to Rwy 10 when using outside visual cues for vertical guidance.



ELEV 24	<b>D</b> TDZE 24
MIRL Rwy 10-28	
FAF to MAP 5.5 NM	
Knots	60 90 120 150 180
Min:Sec	5:30 3:40 2:45 2:12 1:50

CATEGORY	A	B	C	D
S-ILS 10	415-1¼ 391 (400-1¼)			
S-LOC 10	620-1 596 (600-1)		620-1¾ 596 (600-1¾)	
CIRCLING	660-1¼ 636 (700-1¼)		660-1¾ 636 (700-2)	

SE-3, 25 FEB 2021 to 25 MAR 2021

SE-3, 25 FEB 2021 to 25 MAR 2021