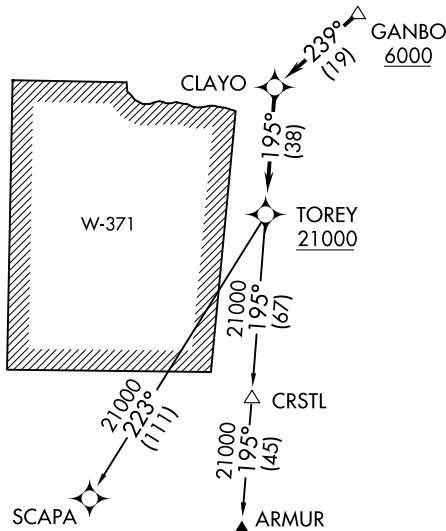
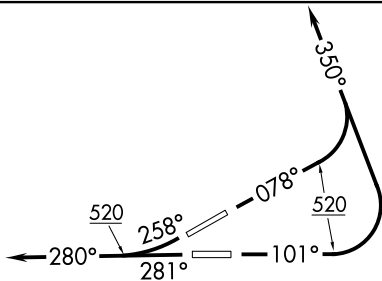


GANBO ONE DEPARTURE (RNAV)

D-ATIS 125.8
 CLNC DEL
 126.4 284.6
 CPDLC
 SAN JUAN TOWER
 132.05 257.8
 GND CON
 121.9 348.6
 SAN JUAN DEP CON
 119.4 269.2 (West & SW)
 120.9 290.2 (North & East)



TAKEOFF MINIMUMS

Rwys 8, 10, 26, 28: Standard.
 Minimum obstacle climb of 390' per NM to 4900. ATC climb of 420' per NM to 6000.

NOTE: GPS Required.

NOTE: For Turbojet aircraft only.

NOTE: RNAV 1.

NOTE: RADAR required.

NOTE: ATC climb of 264' per NM to 21000.

NOTE: If unable to accept climb rates, advise ATC on initial contact.

NOTE: Chart not to scale.

DEPARTURE ROUTE DESCRIPTION

TAKEOFF RUNWAY 8: Climb heading 078° to 520, then climbing left turn heading 350° or as assigned by ATC, expect vectors to GANBO, then via depicted route to TOREY. Thence. . . .

TAKEOFF RUNWAY 10: Climb heading 101° to 520, then climbing left turn heading 350° or as assigned by ATC, expect vectors to GANBO, then via depicted route to TOREY. Thence. . . .

TAKEOFF RUNWAY 26: Climb heading 258° to 520, continue climb heading 280° or as assigned by ATC, expect vectors to GANBO, then via depicted route to TOREY. Thence. . . .

TAKEOFF RUNWAY 28: Climb heading 281° to 520, continue climb heading 280° or as assigned by ATC, expect vectors to GANBO, then via depicted route to TOREY. Thence. . . .

. . . .via assigned transition. Maintain 5000 unless assigned lower altitude. Expect clearance to FL280, or requested altitude if lower, ten minutes after departure.

ARMUR TRANSITION (GANBO1.ARMUR):
SCAPA TRANSITION (GANBO1.SCAPA):

GANBO ONE DEPARTURE (RNAV)

SE-3, 25 FEB 2021 to 25 MAR 2021

SE-3, 25 FEB 2021 to 25 MAR 2021