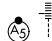


APP CRS	Rwy ldg	8016
101°	TDZE	10
	Apt Elev	10

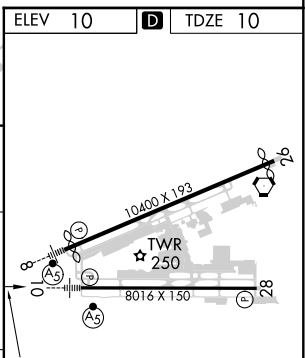
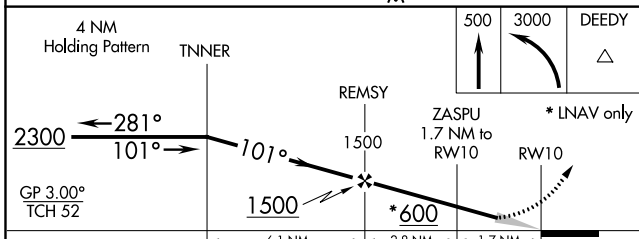
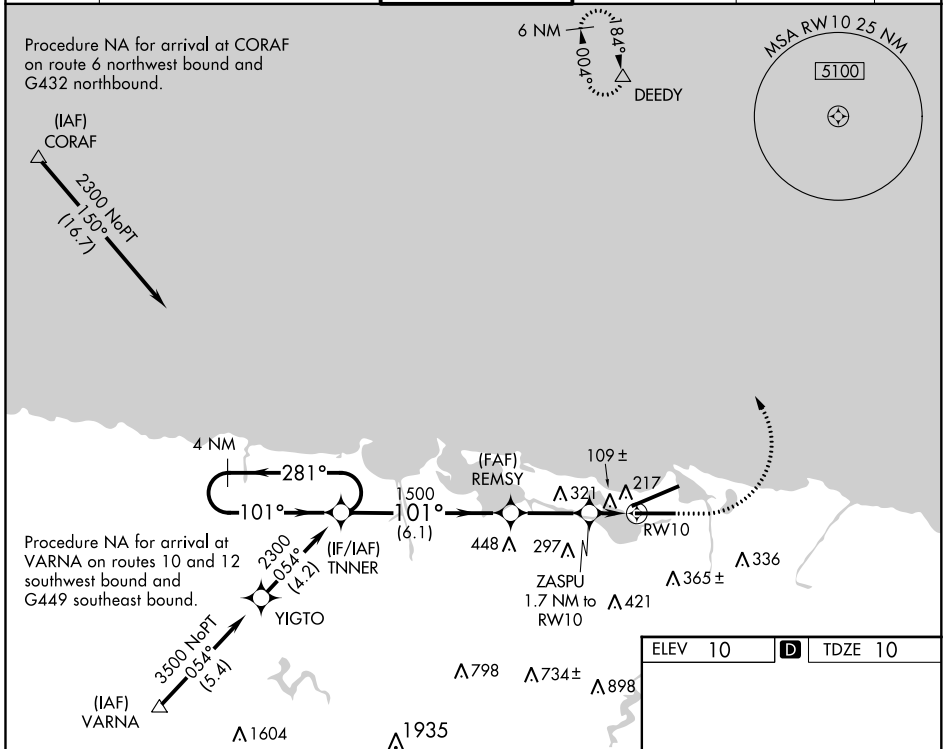
RNAV (GPS) RWY 10

LUIS MUNOZ MARIN INTL (SJU)(TJSJ)

WAAS VNAV NA. For uncompensated Baro-VNAV systems, LNAV/VNAV NA below -15°C (5°F) or above 54°C (130°F). DME/DME RNP-0.3 NA. For inop MALSR, increase LNAV/VNAV visibility all Cats to 1¼ and increase LNAV Cats C/D visibility to 1⅓.

MALSR

MISSED APPROACH: Climb to 500 then climbing left turn to 3000 direct DEEDY and hold.

D-ATIS 125.8	SAN JUAN APP CON 119.4 269.2 (WEST & SW) 120.9 290.2 (NORTH & EAST)	SAN JUAN TOWER 132.05 257.8	GND CON 121.9 348.6	CLNC DEL 126.4 284.6	CPDLC
------------------------	---	---------------------------------------	-------------------------------	--------------------------------	-------



CATEGORY	A	B	C	D
LNAV/VNAV DA	408-7/8 398 (400-7/8)			
LNAV MDA	480-1/2	470 (500-1/2)	480-1	470 (500-1)
CIRCLING	600-1	590 (600-1)	740-2 730 (800-2)	920-3 910 (1000-3)

REIL Rwy 26
 HIRL Rwy 8-26 and 10-28

SE-3, 25 FEB 2021 to 25 MAR 2021

SE-3, 25 FEB 2021 to 25 MAR 2021