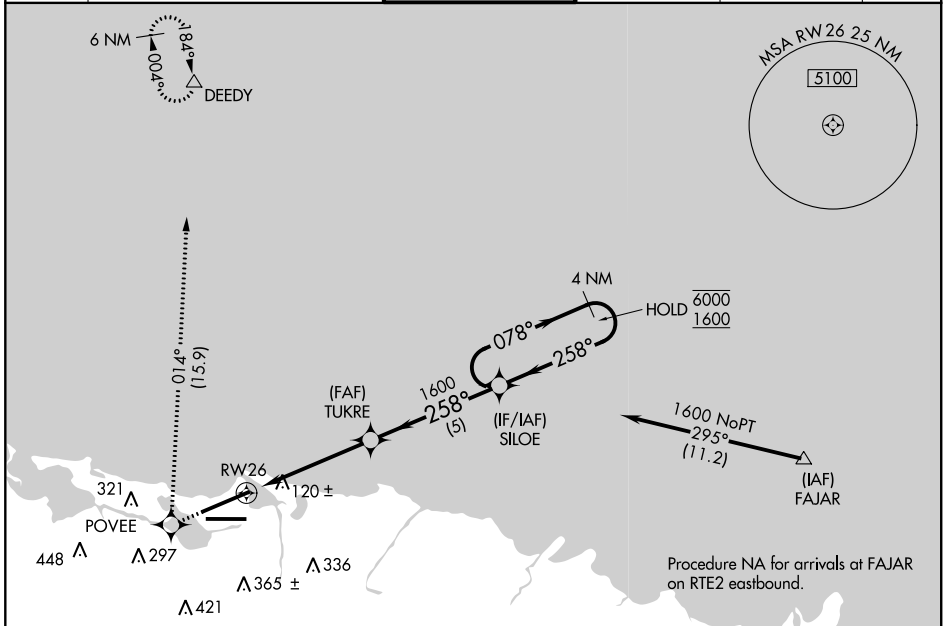


APP CRS	Rwy Idg	9908
258°	TDZE	7
	Apt Elev	10

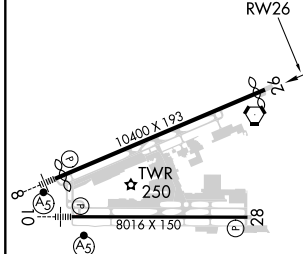
RNAV (GPS) RWY 26

LUIS MUNOZ MARIN INTL (SJU)(TJSJ)

RNP APCH.		MISSED APPROACH: Climb to 3000 direct POVEE and right turn on track 014° direct DEEDY and hold.		
▼ For uncompensated Baro-VNAV systems, LNAV/VNAV ▲ NA below 22°C or above 54°C.				
D-ATIS	SAN JUAN APP CON	SAN JUAN TOWER	GND CON	CLNC DEL
125.8	119.4 269.2 120.9 290.2 (WEST & SW) (NORTH & EAST)	132.05 257.8	121.9 348.6	126.4 284.6
				CPDLC



ELEV 10	D	TDZE 7
---------	----------	--------



3000	POVEE	014° tr	DEEDY	4 NM Holding Pattern
*LNAV only				
*1.1 NM to RWY 26 1.1 NM 3.7 NM 5 NM		TUKRE 1600	SILOE	078° → 6000 ← 258° 1600 GP 3.00° TCH 55
CATEGORY	A	B	C	D
LNAV/VNAV DA	384-1¼ 377 (400-1¼)			
LNAV MDA	400-1	393 (400-1)	400-1½ 393 (400-1½)	400-1¼ 393 (400-1¼)
C CIRCLING	600-1	590 (600-1)	740-2 730 (800-2)	920-3 910 (1000-3)

REIL Rwy 26
HIRL Rwy 8-26 and 10-28

SAN JUAN, PUERTO RICO
Orig-C 10OCT19

18°26'N-66°00'W

RNAV (GPS) RWY 26

LUIS MUNOZ MARIN INTL (SJU)(TJSJ)

SE-3, 25 FEB 2021 to 25 MAR 2021

SE-3, 25 FEB 2021 to 25 MAR 2021