

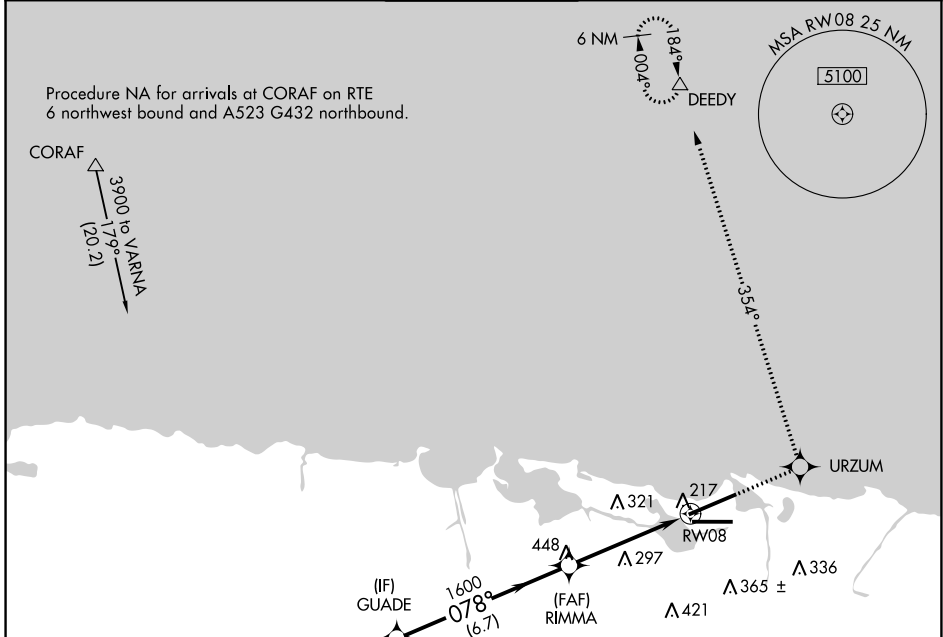
APP CRS	Rwy Idg	9384
078°	TDZE	9
	Apt Elev	10

RNAV (GPS) RWY 8

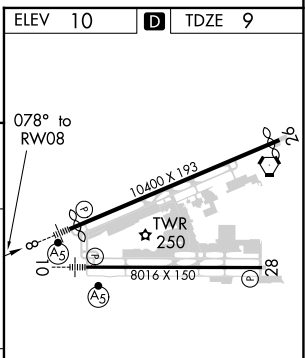
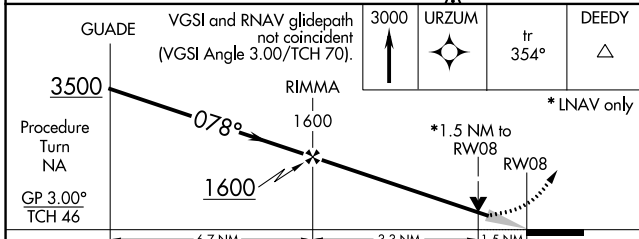
LUIS MUNOZ MARIN INTL (SJU)(TJSJ)

WAAS VNAV NA. For uncompensated Baro-VNAV systems, LNAV/VNAV NA below -15°C (5°F) or above 48°C (118°F). DME/DME RNP-0.3 NA.	MALSR	MISSED APPROACH: Climb to 3000 direct URZUM and on track 354° to DEEDY and hold.
---	--------------	---

D-ATIS 125.8	SAN JUAN APP CON 119.4 269.2 (WEST & SW) 120.9 290.2 (NORTH & EAST)	SAN JUAN TOWER 132.05 257.8	GND CON 121.9 348.6	CLNC DEL 126.4 284.6	CPDLC
------------------------	---	---------------------------------------	-------------------------------	--------------------------------	-------



ELEV 10	D	TDZE 9
---------	----------	--------



CATEGORY	A	B	C	D
LNAV/VNAV DA	530-1¼ 521 (600-1¼)			
LNAV MDA	560-½ 551 (600-½)	560-1 551 (600-1)	560-1¼ 551 (600-1¼)	
C CIRCLING	600-1 590 (600-1)	740-2 730 (800-2)	920-3 910 (1000-3)	

REIL Rwy 26
HIRL Rwys 8-26 and 10-28

SE-3, 25 FEB 2021 to 25 MAR 2021

SE-3, 25 FEB 2021 to 25 MAR 2021